

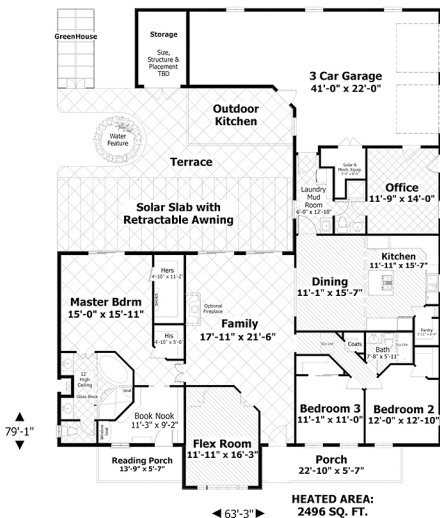


Order Code: PT104

There is a home office & dedicated spaces off the garage for any supplemental energy equipment.

House Plan **98404**

| | |
|-------------------|--------------------------------|
| Total Living Area | 2,496 sq.ft |
| Main Level | 2,496 sq.ft |
| Bedrooms | 4 |
| Bathrooms | 3 |
| Garage Type | 3 Bay |
| Dimensions | 63'3" Wide x 79'1" Deep |



familyhomeplans.com