

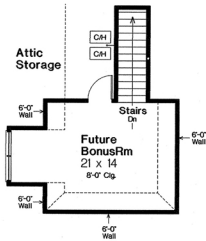
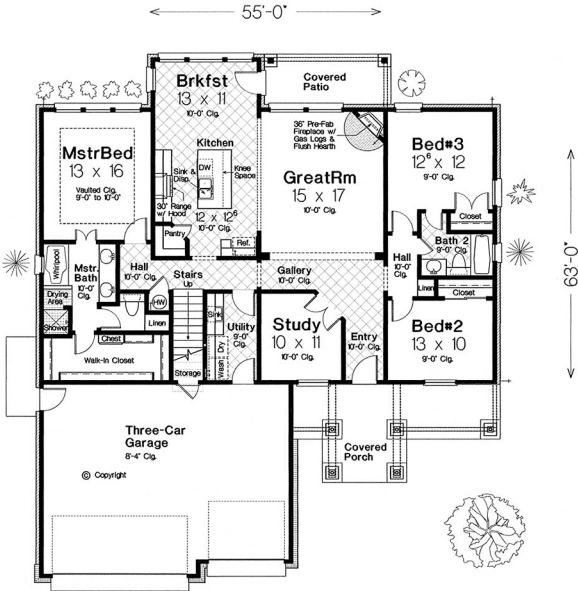


Order Code: PT104

In the great room, we find a corner pre-fab fireplace with gas logs and flush hearth.

House Plan 96342

Total Living Area	1,921 sq.ft
Main Level	1,921 sq.ft
Upper Level	278 sq.ft (bonus)
Bedrooms	3
Bathrooms	2
Garage Type	3 Bay
Dimensions	55' W x 63' D



Upper Floor
278 Sq. Ft. Not Included
In Total Sq. Footage
All Ceiling Heights 8'-0" Unless Noted.