



Order Code: **PT104**

This lovely 2,697 square foot Craftsman has a brick, stone and siding exterior.

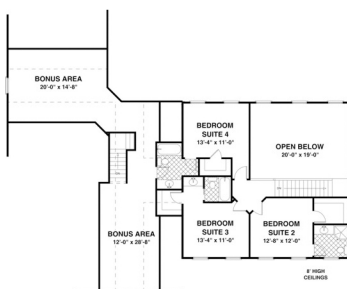
House Plan **92392**

Total Living Area	2,697 sq.ft
Main Level	1,891 sq.ft
Upper Level	806 sq.ft
Bedrooms	4
Bathrooms	4.5
Garage Type	3 Bay
Dimensions	70' W x 58'10" D



LOWER LEVEL

HEATED SQUARE FOOTAGE:
UPPER 806
LOWER 1891
TOTAL 2697
BONUS 774



UPPER LEVEL