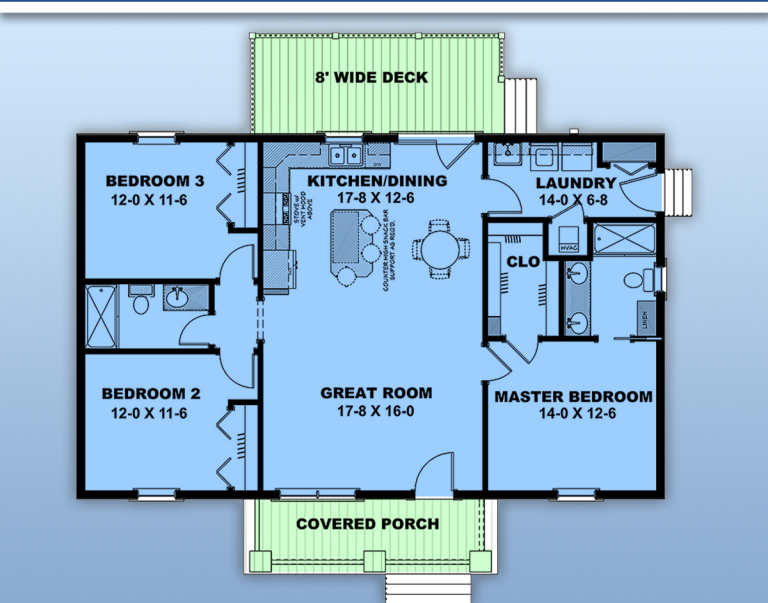


plan 77400

A 3D architectural rendering of a single-story cottage-style house. The house features a steep gable roof with grey metal siding. The exterior walls are finished with white vertical siding. A small front porch with a white railing and a set of steps leads to a dark front door. There are several windows, including a small square window in the gable and larger rectangular windows on the main level. The house is set on a green lawn with some shrubs and trees in the background. The sky is blue with light clouds. The text 'plan 77400' is overlaid in the top left corner in a large, white, sans-serif font.

familyhomeplans.com  **800-482-0464**



1311 sq ft, 3 beds, 2 baths, 46' W x 43' D