

# plan 74635



sq ft  
3410

beds  
5

baths  
3.5

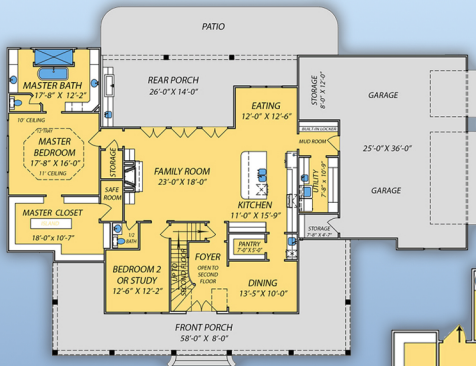
bays  
3

width  
90'

depth  
60'

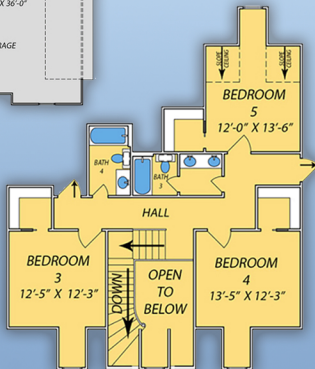
800-482-0464

familyhomeplans.com



Main Level

Upper Level



**AREAS:**

LIVING FIRST:	2405 SQ.FT.
LIVING SECOND:	1005 SQ.FT.
TOTAL LIVING:	3410 SQ.FT.
GARAGE & STORAGE:	1070 SQ.FT.
PORCHES:	1146 SQ.FT.
TOTAL:	5626 SQ.FT.

NOTE: AREAS SHOWN ABOVE DO NOT INCLUDE BRICK VENEER

FIRST FLOOR: 10' CEILINGS  
SECOND FLOOR: 9' CEILINGS  
UNLESS OTHERWISE NOTED