

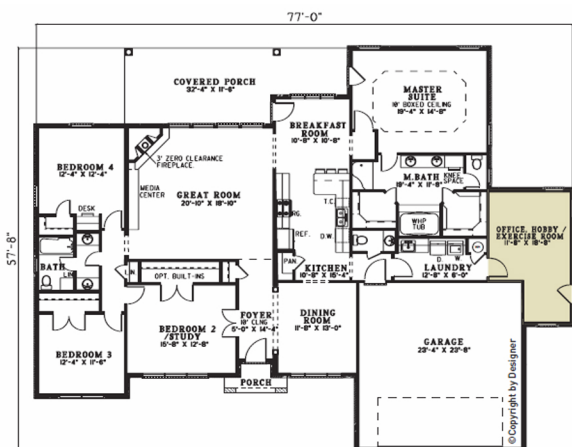


**Order Code: PT104**

Flexible options abound in the  
privately located  
office/hobby/exercise room.

## House Plan **62003**

Total Living Area	2,582 sq.ft
Main Level	2,582 sq.ft
Bedrooms	4
Bathrooms	2.5
Garage Type	2 Car Garage
Dimensions	77' Wide x 57'8" Deep



**familyhomeplans.com**