

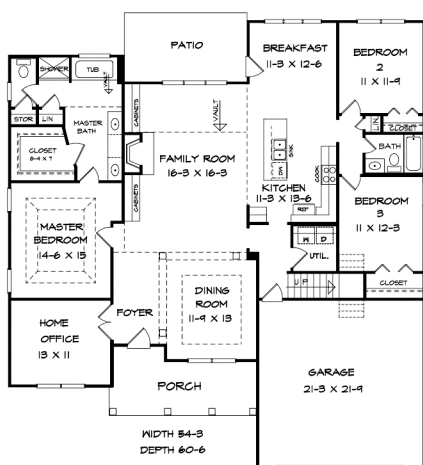


Order Code: **PT104**

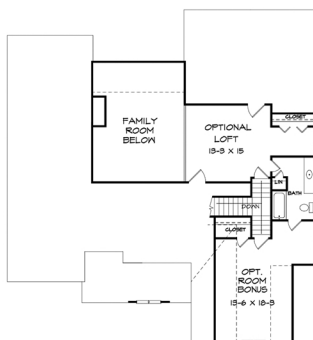
We love the vaulted ceiling in the family room and the built-in cabinets around the fireplace.

House Plan **60058**

Total Living Area **2,080 sq.ft**
 Main Level **2,080 sq.ft**
 Upper Level **689 sq.ft**
 Bedrooms **3**
 Bathrooms **2**
 Garage Type **2 bay**
 Dimensions **54'4" W x 58'6" D**



FIRST FLOOR PLAN



SECOND FLOOR PLAN

OPTIONAL BONUS ROOM / BATH ADDS - 421 SQ. FT.
 OPTIONAL LOFT ADDS - 268 SQ. FT.