

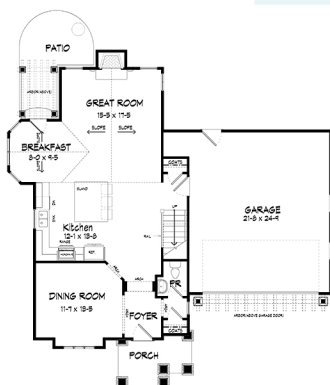


**Order Code: PT104**

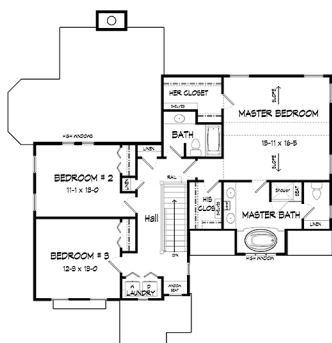
The sloped ceilings in the breakfast room and the great room makes the areas feel open and spacious.

## House Plan **60034**

Total Living Area	<b>2,122 sq.ft</b>
Main Level	<b>977 sq.ft</b>
Upper Level	<b>1,145 sq.ft</b>
Bedrooms	<b>3</b>
Bathrooms	<b>2.5</b>
Garage Type	<b>2 Bay</b>
Dimensions	<b>50'10" W x 52'2" D</b>



WIDTH: 50'-2"  
DEPTH: 52'-2"  
**MAIN LEVEL**



**UPPER LEVEL**