

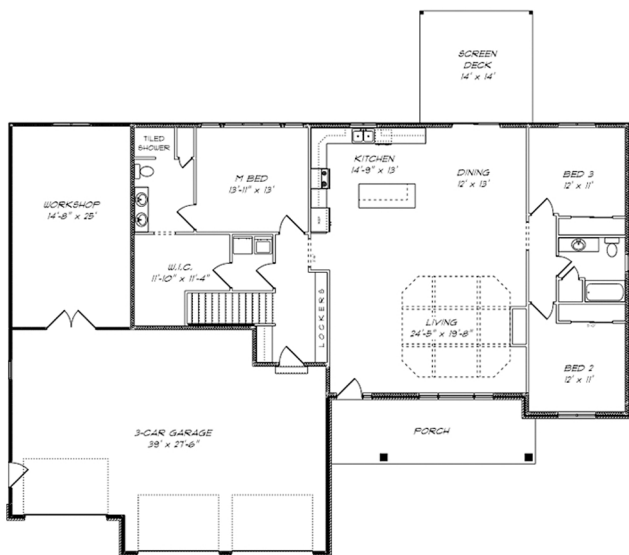


Order Code: PT104

House Plan 50910 features an open living concept, trayed ceiling and split bedroom layout.

House Plan **50910**

Total Living Area	1,980 sq.ft
Main Level	1,980 sq.ft
Bedrooms	3
Bathrooms	2
Garage Type	3 Bay
Dimensions	77'8" Wide x 67'10" Deep



MAIN FLOOR PLAN